

The background is a vibrant, abstract marbled pattern in shades of blue and gold. The pattern consists of irregular, vein-like shapes and speckles of gold against a blue base. A thin white circle is centered on the page, framing the text.

SLS

DUBAI

FACT SHEET

LOCATION

Located in the Downtown district, SLS Dubai offers incomparable 360-degree views over the city. Voted as the top Middle East hotel of the Condé Nast Traveler's reader's choice awards, SLS Dubai provides unobstructed views of the iconic Burj Khalifa, along with a clear overhead of the calming Dubai Creek.

The impressive 75 story tower makes SLS Dubai one of the tallest hotels and residences in the region. Developed in collaboration with international architecture firm Aedas, SLS Dubai comprises of 254 expertly designed hotel rooms, 321 hotel apartments and 371 residential units by acclaimed designer Paul Bishop. In true SLS fashion, the hotel features contemporary art, sleek accents & exceptional fittings that are unique characteristics of the brand's DNA.

A STONE'S THROWAWAY (IN MINUTES)

3 Minutes: To Dubai mall and Burj khalifa

5 Minutes: To Dubai design district 7-10 minutes to DIFC

10 Minutes: To Dubai international airport

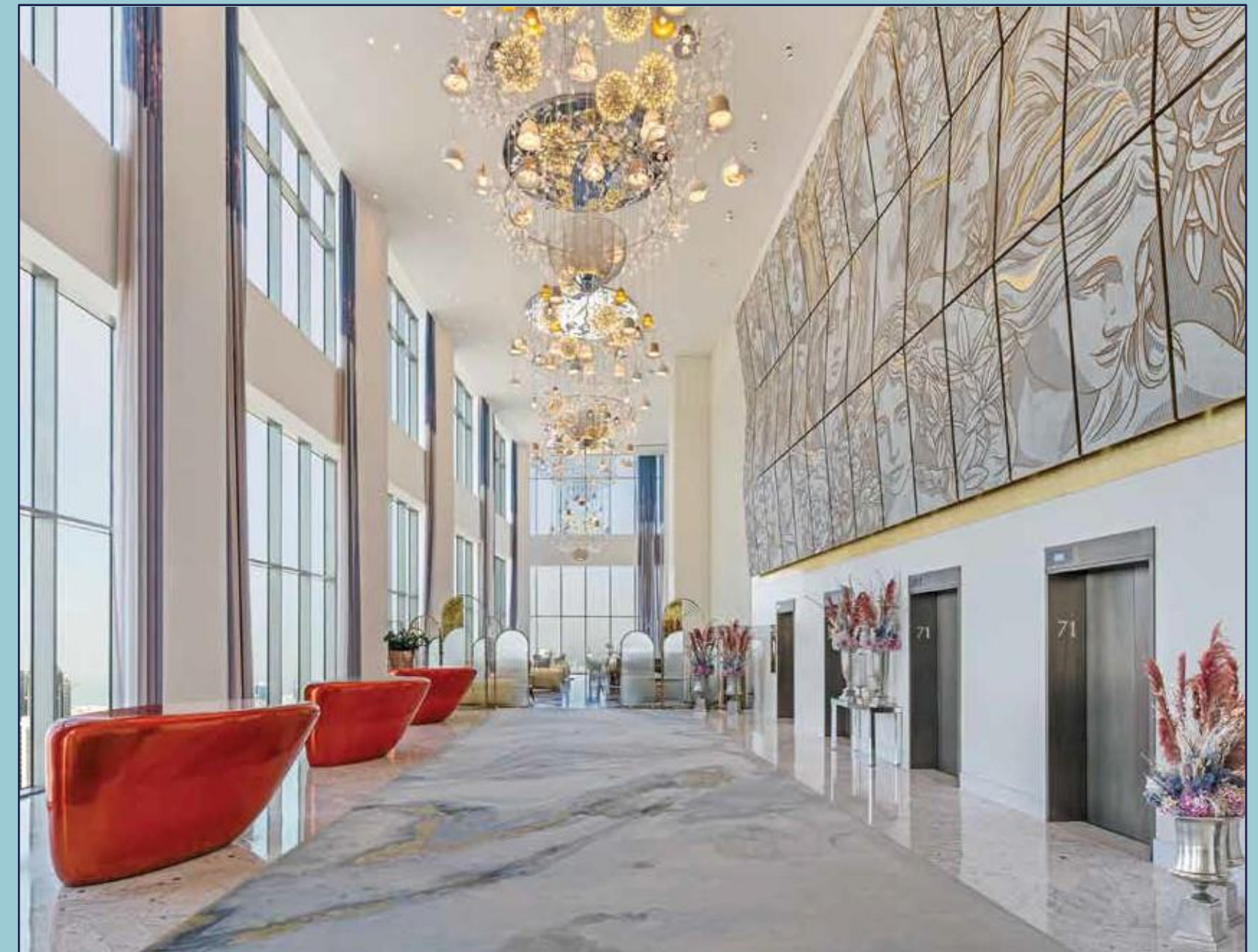
15 Minutes: To Burj Al Arab Jumeirah

HOTEL & RESIDENCES



THE SLS DUBAI ENTRANCE

You'll be met with a large stained, coloured glass window, beautifully exhibiting the famous Latin quote of "Fortune Favours the Bold" a saying that holds true to our daring approach to excellence. This historic artform of coloured glass windows captivates guests, architects and design lovers, alike.



SKY LOBBY

Guests entering through the ground atrium take an express elevator to the opulent Sky Lobby, located on the 71st floor. Floor-to-ceiling windows surround a deluxe lounge and lobby bar, along with panoramic views of the city's bright skyline.

HOTEL ROOMS

Spy on breathtaking scenery from the rooms' spacious terraces and balconies as you set your sights over Dubai Creek, or the twinkling lights of the Burj Khalifa and unobstructed views of the Downtown Dubai, come sunset or sunrise. Decorated in lilac and violet tones, with romantic accents of rose gold motifs, the sublime layouts of the rooms, courtesy of award-winning architects Aedas and interior designer Paul Bishop, are the epitome of luxury living, with a playful twist.

MEET THE HOTEL ROOMS

- 169 Signature Rooms
- 39 Signature Duo
- 3 Signature Safe Duo Beds
- 10 Sky King
- 20 Sky Premium
- 10 Sky Suite
- 2 Vanilla Sky
- 1 Presidential Suite



Total of 254 Hotel Rooms & Suites



HOTEL APARTMENTS

Have access to ultimate exclusivity with SLS Hotel Apartments. Each apartment has a contemporary sophisticated feel, offering the finest in furnishings, materials and finishes. Marvel at breathtaking views of Downtown Dubai, luxuriate in an intimate address with quality services and the promise of additional privacy and discretion.

MEET THE APARTMENTS:

- 68 Studios
- 24 One Bedrooms
- 99 One Bedroom Lofts
- 93 One Bedroom Duplexes
- 3 Two Bedroom Lofts
- 34 Two Bedroom Duplex

Total of 321 Hotel Apartments





SLS

DUBAI

CROWN JEWELS



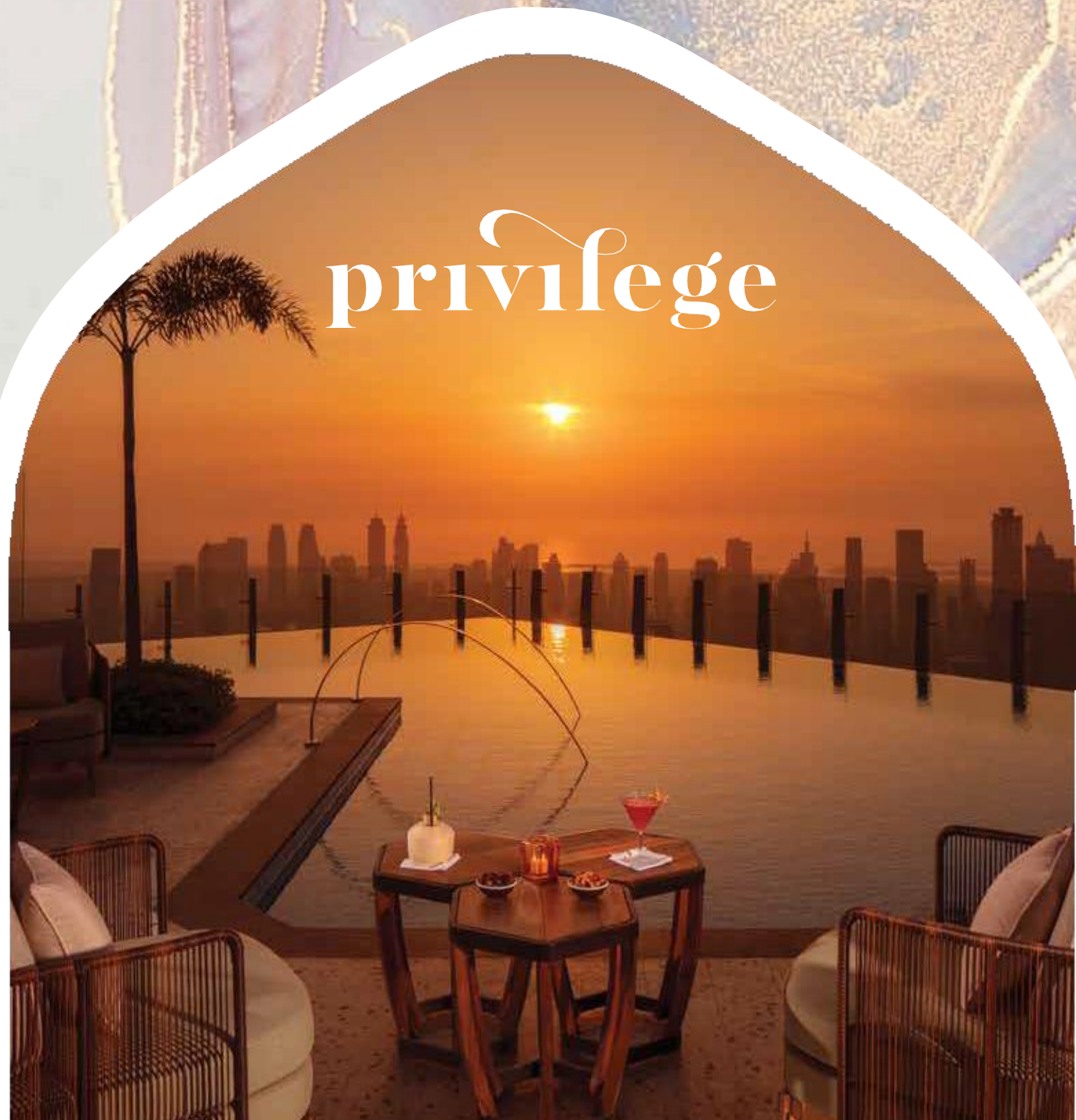
Michelin Bib Gourmand award winning restaurant, Fi'lia is a daily destination offering local artisanal foods, handcrafted cocktails, and culturally immersive experiences. Fi'lia celebrates a genuine approach to Italian cuisine with a hint of Mediterranean influence. Proud to be a female led restaurant in the region, Fi'lia highlights empowerment and equality. Located at the 70th floor with an abundance of natural light and terrace for the perfect al fresco dining, complimented by breathtaking views of Burj Khalifa. Committed to sourcing the best ingredients, expect handmade pastas, craft pizzas, freshly baked breads and innovative vegetable driven dishes.

Total seating capacity: 204 guests



Carna, a contemporary steakhouse concept helmed by the legendary butcher, Dario Cecchini from the Chianti region of Tuscany, Italy. Located at the 74th floor, spend a leisurely evening with friends at the atmospheric indoor space surrounded by panoramic views of downtown Dubai. Carna offers dinner that combines your traditional steakhouse classics with a unique and experience driven culinary take. Carna by Dario Cecchini features an intimate setting rich in velvet interiors, a dedicated bar, private dining area, and striking chandeliers.

Total seating capacity: 70 guests



The most jaw-dropping feature is found on SLS Dubai's rooftop, with its signature rooftop venue, Privilège, where two infinity pools are placed at the top of the 75 stories, with stunning views of the city, guaranteeing to be the most unrivalled sight seeing spot in town. With signature cocktails, light fare and all the sun to soak, Privilège is the spot to be for sky-high dippers looking to make a splash.

Pool deck total seating capacity: 201 guests
Nightclub total seating capacity: 7 guests



A collaborative masterpiece by SLS Dubai and 7 Management, Tamada is an immersive new destination showcasing Eastern European cuisine with a flair. Tamada promises visual brilliance, culinary excellence, and an unparalleled ambience. Celebrate Dubai's cultural vibrancy and diverse palate by savoring caviar and clinking glasses to the rhythmic cadence of music.

Total seating capacity: 120

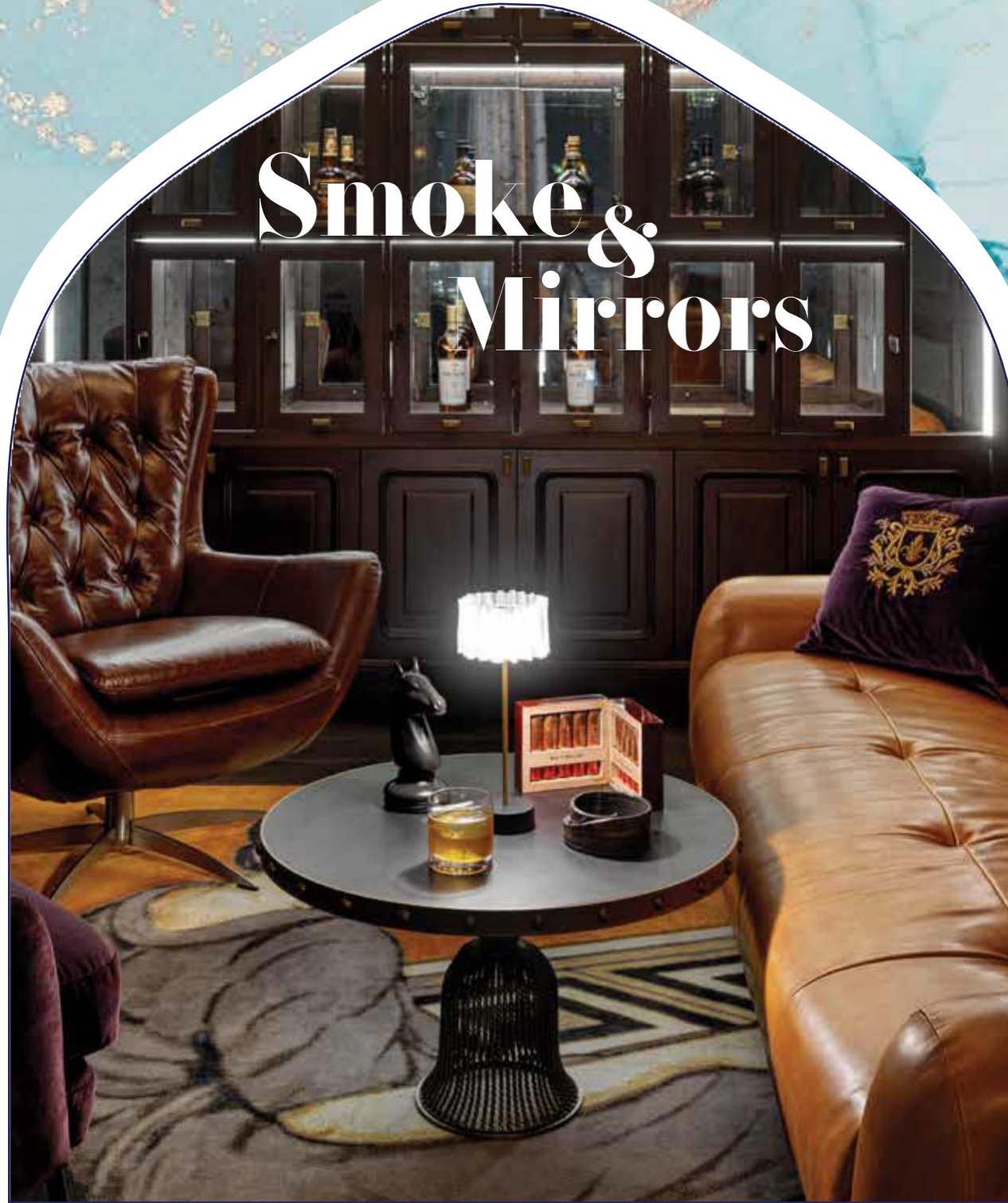
ELLAMIA



A sense of cute with its crisp, white interiors, EllaMia is the perfect spot to enter a mid day daydream with a cup of coffee. Located on the ground floor, EllaMia is all about serving good old-fashioned caffeine, with the aroma of your favourite morning brew, along with a side of house made and freshly baked sweets from macarons, cakes and more.

Total capacity: 36 guests

Smoke & Mirrors



Disrupting the ordinary, the stylish SLS Dubai is holding onto the best-kept secret in town – a venue where everything is not as it seems. A smooth and sultry lounge, Smoke and Mirrors is one of the most sought after destinations in Dubai. Hailing from Mondrian Doha, Smoke and Mirrors is an intriguing blend of mystery, style, divine food, and great music. The best things happen behind closed doors.

Total seating capacity: 55 guests

S BAR

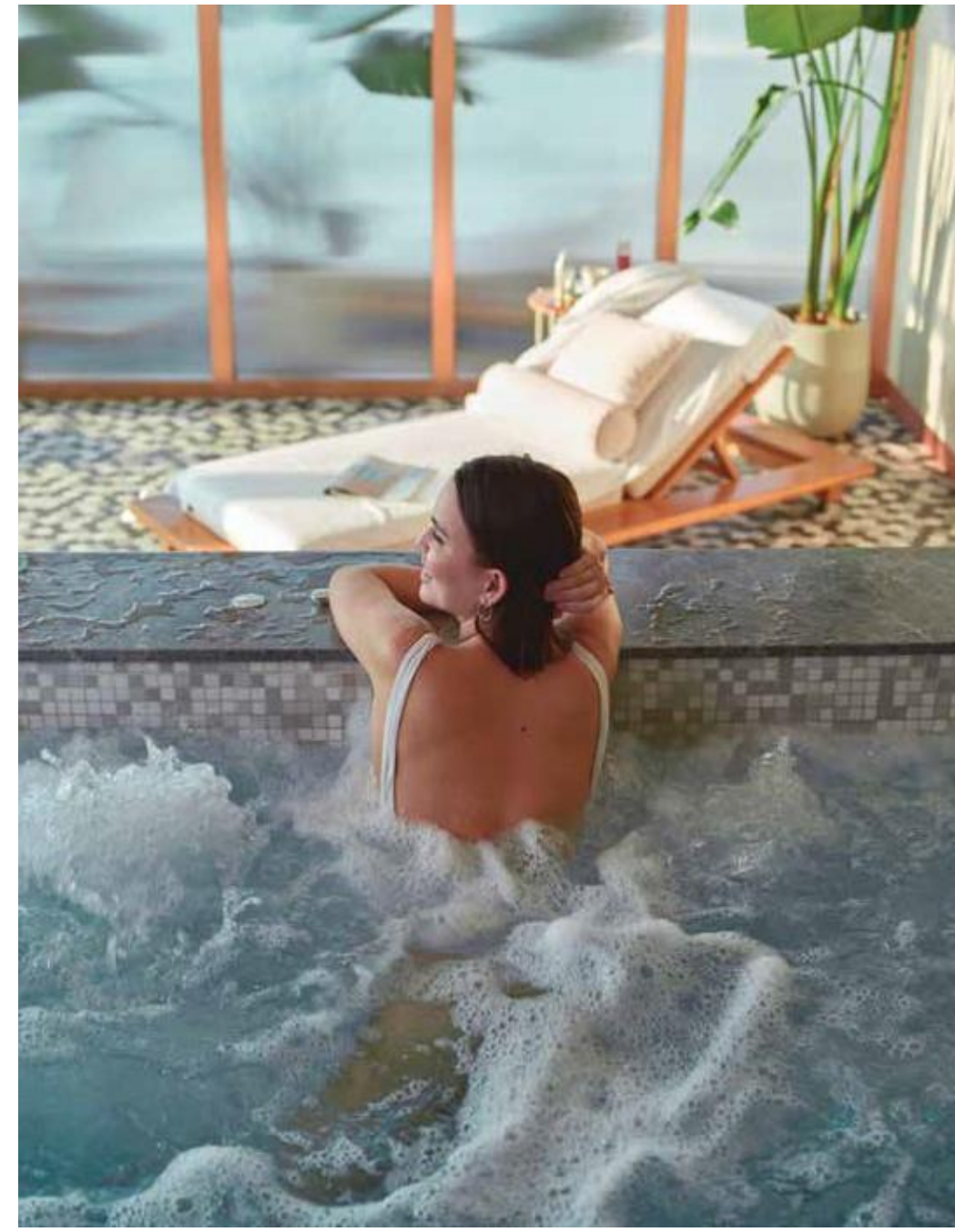


S Bar takes lounge life to new heights. The vibe is casual and the style is bohemian chic with an urban edge. Offering an eclectic and evolving musical experience, innovative cocktails, and a tempting array of lite bites, S Bar is the perfect place to meet up with friends any day of the week for an intimate tête-a-tête or an all night party at the outdoor terrace to watch the sun set and the stars light up.

Total capacity: 92 guests

CIEL

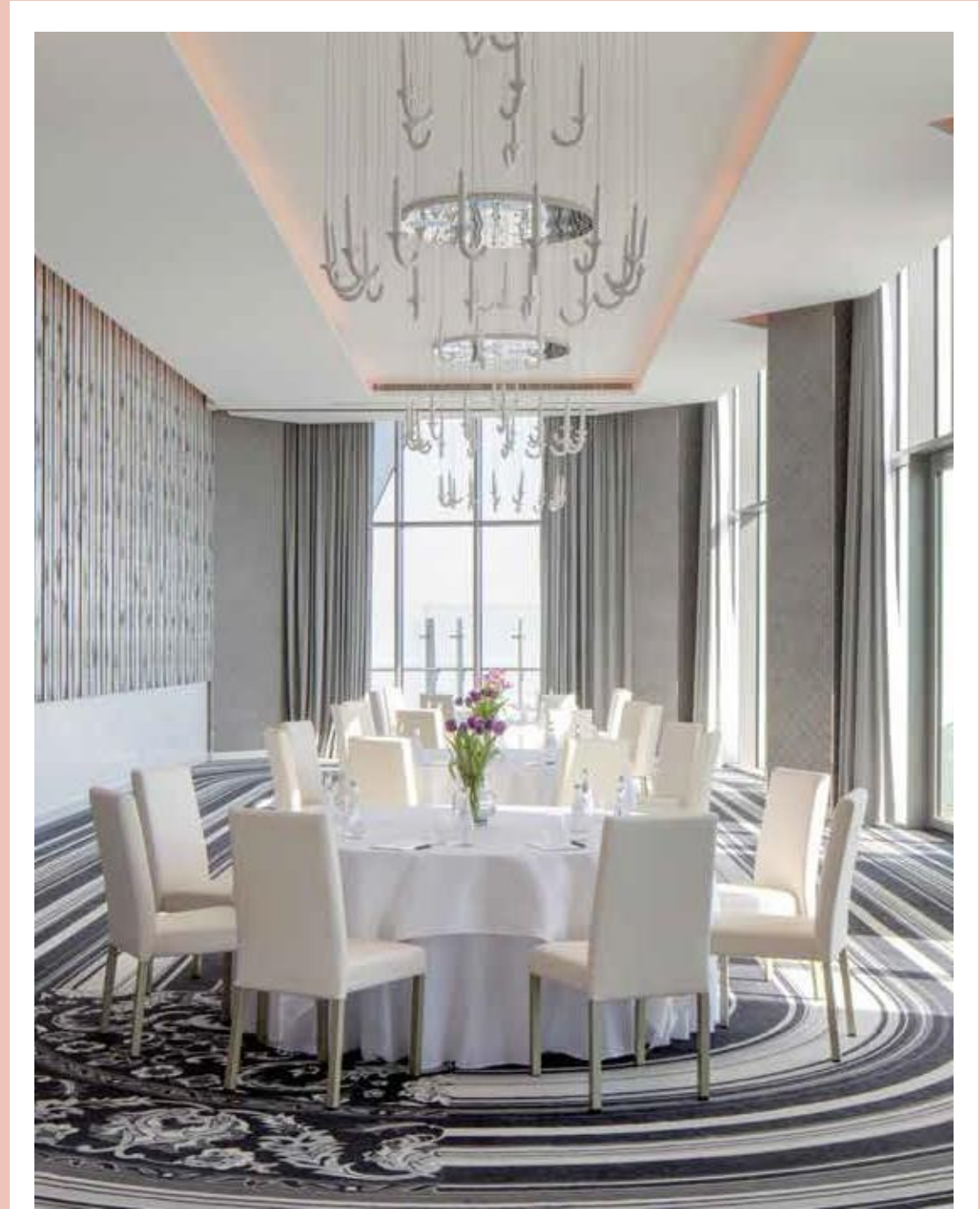
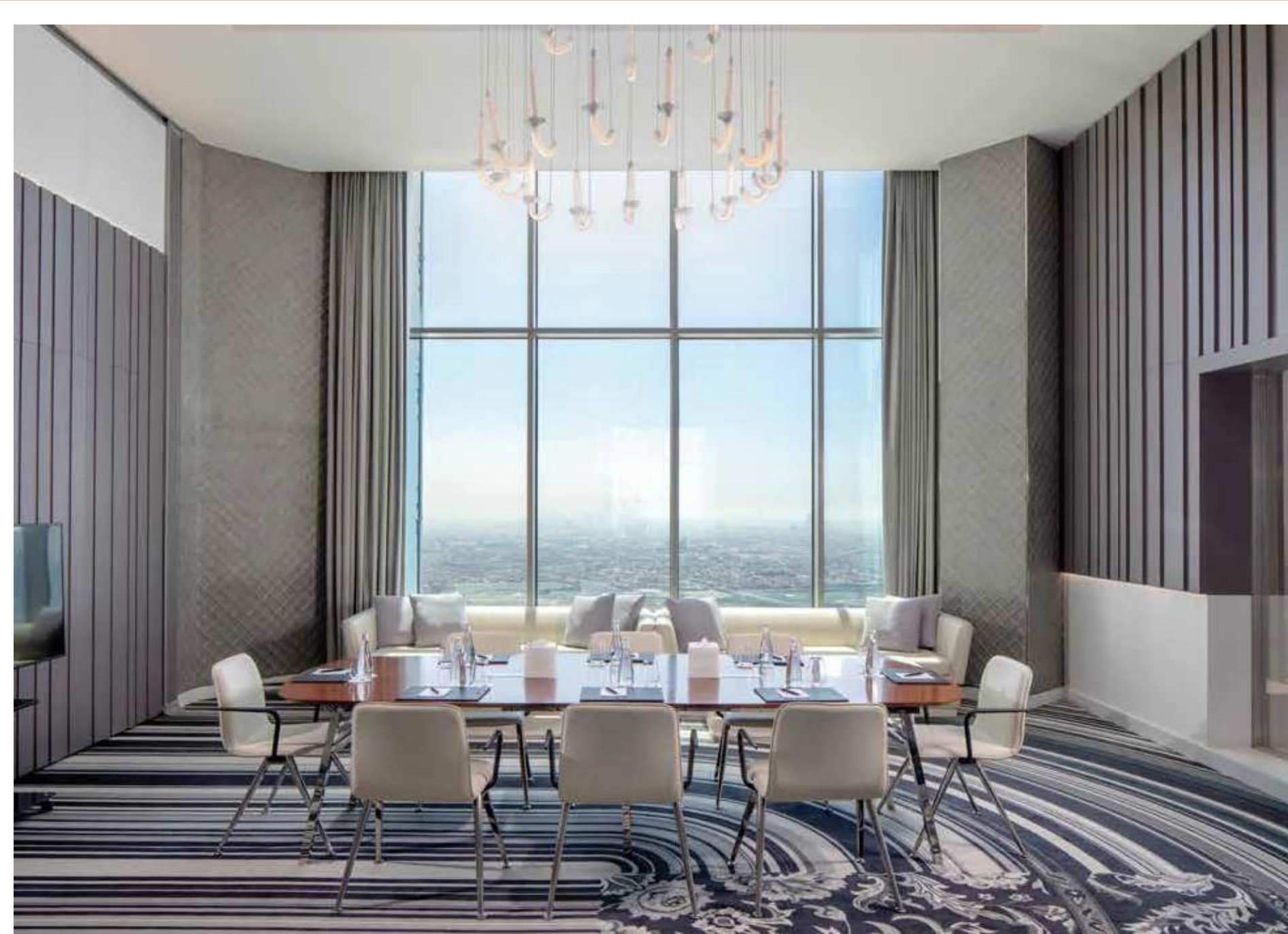
SPA



SLS Dubai also includes a signature spa concept, Ciel Spa, the epitome of luxury with 7 treatment rooms, dedicated male and female thermal areas that contain steam rooms, experience showers, plunge pools and relaxation rooms, as well as a full-service grooming salon, a fully equipped gym and outdoor terraces.

MEETINGS & EVENTS

Setting the stage for every and any occasion, from corporate to social events. SLS Dubai's dedicated catering and conference services team always value attention to detail, ensuring that every type of event is perfectly completed from start to end. There are a total of 6 meeting and ballrooms, with over 260 square meters of space, that can accommodate a range of numbered guests, from 10 to 200.





The rubber duck imagined. SLS Dubai is home to the SLS duck, bringing the brand's multicolour and playful spirit to life. Wouldn't you want to be chilling poolside with the SLS iconic figure?

The background is a complex marbled paper pattern. It features organic, flowing shapes in various shades of blue, from deep navy to light sky blue, interspersed with thin, irregular veins of gold or light brown. The overall effect is rich and textured. A thin, white, hand-drawn style oval is centered on the page, framing the text.

THANK YOU